

SMA

CONNECTOR SERIES

INTERFACE MATING DIMENSIONS

SPECIFICATIONS

CONTENT:

R/A Crimp Plug	Panel Recept Jack-Solder Cup
R/A Bulkhead Crimp Jack	Panel Recept Jack-Blind Post
Crimp Plug	Plug To Plug Adaptor
Crimp Jack	R/A Plug To Jack Adaptor
Bulkhead Crimp Jack	Plug To Jack Adaptor
R/A Direct Solder Plug	Jack To Bulkhead Jack Adaptor
Direct Solder Plug	Jack To Jack Adaptor
Bulkhead Direct Solder Jack	Panel Jack To Jack Adaptor
Panel Crimp Jack	T- Angle Jack-Jack-Jack Adaptor
Panel Direct Solder Jack	T- Angle Jack-Plug-Jack Adaptor
Direct Solder Jack	End Launch Plug
R/A PCB Mount Jack	Panel Recept Plug- Solder Cup
PCB Mount Jack	Pcb Bulkhead Jack
End Launch Jack-SMT	R/A Panel Recept Jack-Exposed Teflon
End Launch Jack	
Bulkhead Recept Jack	
Panel Recept Jack-Solder Cup	
Panel Recept Jack-Tab	
Panel Recept Jack-Exposed Teflon	

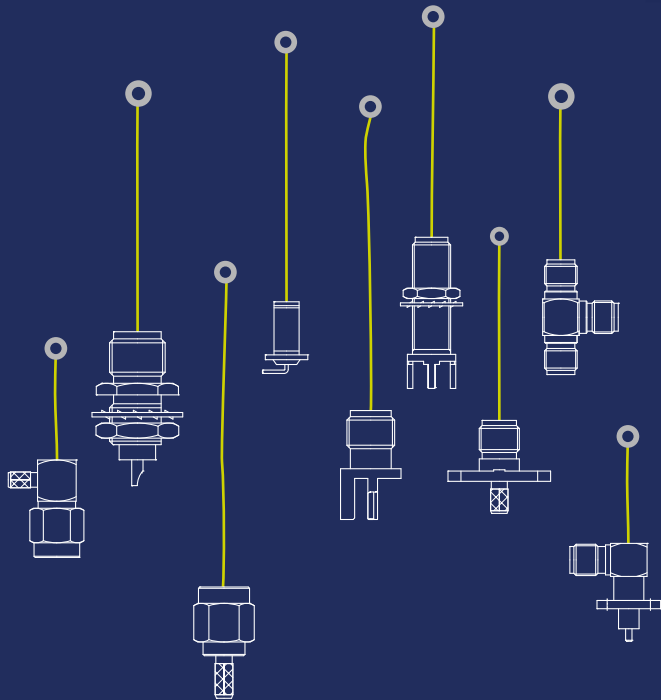
Bridging Gaps



SMA series

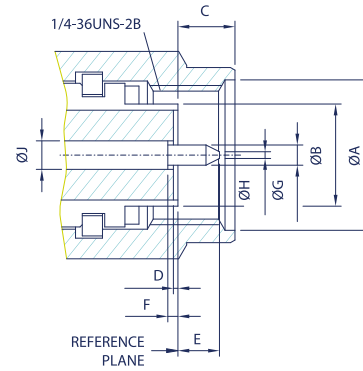
SMA connectors are subminiature units designed to provide high electrical performance for microwave applications up to 18 GHz.

Constructed with Brass or high quality Stainless Steel, SMA connectors ensure excellent durability and mechanical strength.

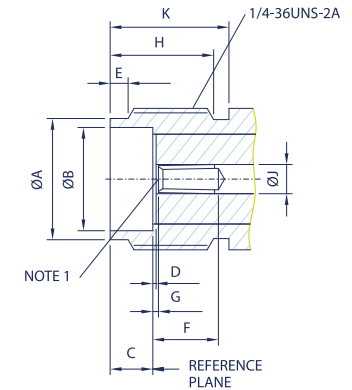


INTERFACE MATING DIMENSIONS

PLUG /



JACK /



PLUG		
Letter	Millimeters	
	Minimum	Maximum
A	6.35	6.73
B	4.53	4.59
C	2.54	3.43
D	0.00	0.25
E	1.91	2.54
F	0.00	0.25
G	0.90	0.94
H	0.00	0.38
J	1.24	1.30

JACK		
Letter	Millimeters	
	Minimum	Maximum
A	5.28	5.49
B	4.60	4.67
C	1.88	1.98
D	0.00	0.25
E	0.38	1.14
F	2.92	-
G	0.00	0.25
H	4.32	-
I	1.24	1.30
J	5.54	-

NOTE 1: I.D. TO MEET VSWR AND CONTACT RESISTANCE WHEN MATED WITH 0.9 / 0.94 MM DIA. PIN.

SPECIFICATIONS

Electrical /

Impedance	50 Ohm	
Frequency Range	0–12.4 GHz on Flexible cable 0–18 GHz on Semi-Rigid cable	
Working Voltage	RG–178: 170 VRMS Max. RG–316,.085": 250 VRMS Max. RG–142,.141": 335 VRMS Max.	
Dielectric Withstanding Voltage	RG–178: 500 VRMS Min. RG–316,.085": 750 VRMS Min. RG–142,.141": 1000 VRMS Min.	
VSWR	Straight	1.3 Max.
	Right Angle	1.5 Max.
Contact Resistance	Center Contact	3 Milliohms Max.
	Outer Contact	2 Milliohms Max.
Insulator Resistance	5000 Megohms Min.	

Material /

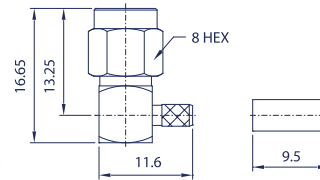
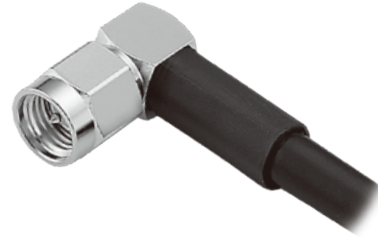
Parts Name	Material	Finish
Body, Metal Parts	Brass per QQ-B-626	Gold 3 micro-inches
Center Contacts	Male: Brass per QQ-B-626	Gold 30 micro-inches
	Female: Beryllium copper per QQ-C-530	Gold 30 micro-inches
Insulators	Teflon	None
Crimp Ferrules	Annealed Copper	Gold 3 micro-inches
Clamp Gaskets	Silicone Rubber	None

NOTE: Other Material / Finish is Available on Request.

Mechanical & Environmental /

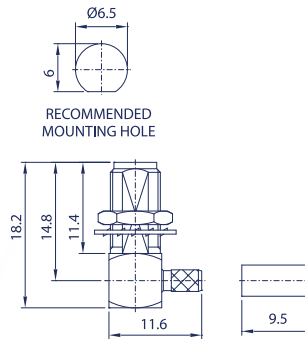
Engagement Force	2 in-lbs. Max.
Disengagement Force	2 in-lbs. Max.
Coupling Nut Retention	60 lbs. Min.
Coupling Proof Torque	15 in-lbs. Min.
Contact Retention	6 lbs. Min.
Durability (Mating)	500 cycles Min. (For beryllium copper female connect only)
Temperature Range	-65°C to 165°C
Vibration	MIL-STD-202 Method 204 Test Cond.B.
Salt Spray	MIL-STD-202 Method 101 Test Cond.B.
Thermal Shock	MIL-STD-202 Method 107 Test Cond.B.

SMA series



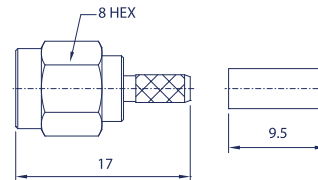
R/A CRIMP PLUG

Model No.	Cable Group	Impedance
FL78P1-NR5	RG-174/U, 188A/U, 316/U RG-316/U DOUBLE BRAID RG-178B/U, 196A/U	50



R/A BULKHEAD CRIMP JACK

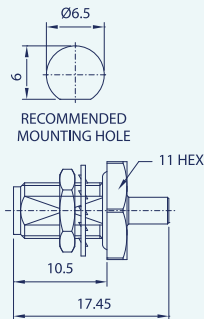
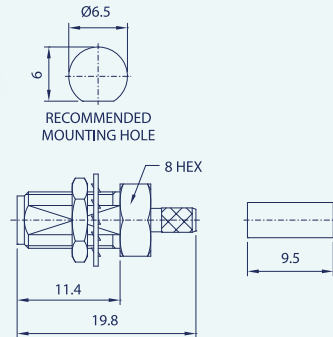
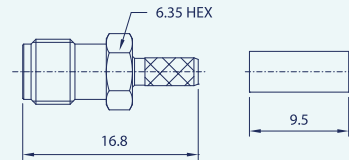
Model No.	Cable Group	Impedance
FL78J1-BR5	RG-174/U, 188A/U, 316/U RG-316/U DOUBLE BRAID RG-178B/U, 196A/U	50



CRIMP PLUG

Model No.	Cable Group	Impedance
FL78P1-NS5	RG-58/U, 58C/U RG-142A/U, 223/U, 400/U RG-174/U, 188A/U, 316/U RG-316/U DOUBLE BRAID RG-213/U, B8267 RG-214/U, B8268 LMR-400, B7810A, B8214	50





CRIMP JACK

Model No.	Cable Group	Impedance
FL78J1-NS5	RG-58/U, 58C/U RG-142A/U, 223/U, 400/U RG-174/U, 188A/U, 316/U RG-316/U DOUBLE BRAID RG-213/U, B8267 RG-214/U, B8268 LMR-400, B7810A, B8214	50

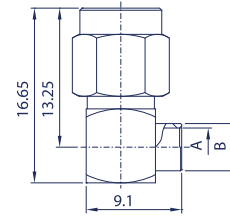
BULKHEAD CRIMP JACK

Model No.	Cable Group	Impedance
FL78J1-B55	RG-58/U, 58C/U RG-142A/U, 223/U, 400/U RG-174/U, 188A/U, 316/U RG-316/U DOUBLE BRAID	50

BULKHEAD CRIMP JACK

Model No.	Cable Group	Impedance
FL78J1-DS5	RG-178B/U, 196A/U 1.3mm, 1.32mm, 1.5mm	50

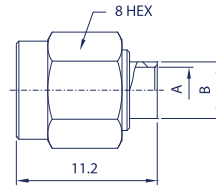
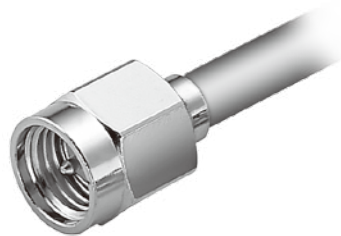
SMA series



.085" Cable A=2.25 Min, B=3.2 Min
 .141" Cable A=3.65 Min, B=4.5 Min

R/A DIRECT SOLDER PLUG

Model No.	Cable Group	Impedance
FL78P2-NR5	.141" .085", .086"	50

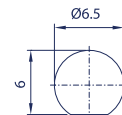


.085" Cable A=2.25 Min, B=3.2, Min, C=3.8
 .141" Cable A=3.65 Min, B=4.5, Min, C=3

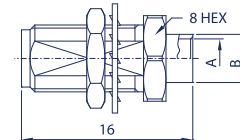
DIRECT SOLDER PLUG

Model No.	Cable Group	Impedance
FL78P2-NS5	.141" .085", .086"	50

06



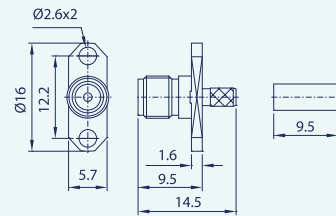
RECOMMENDED MOUNTING HOLE



.085" Cable A=2.25 Min, B=3.2 Min
 .141" Cable A=3.65 Min, B=4.5 Min

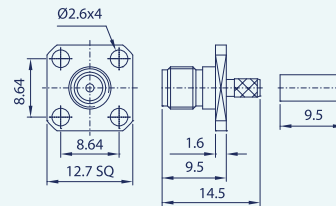
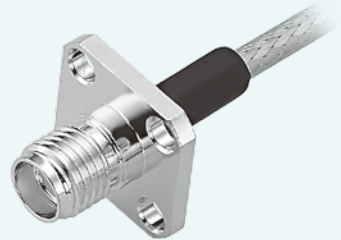
BULKHEAD DIRECT SOLDER JACK

Model No.	Cable Group	Impedance
FL78J2-B55	.141" .085", .086"	50



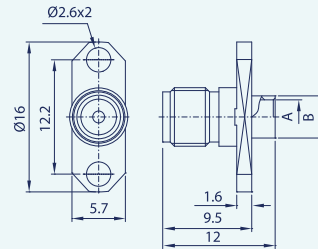
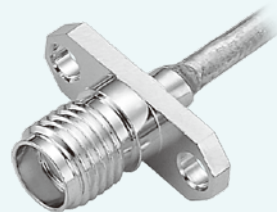
PANEL CRIMP JACK

Model No.	Cable Group	Impedance
FL78J1-ES5	RG-174/U, 188A/U, 316/U RG-316/U DOUBLE BRAID	50



PANEL CRIMP JACK

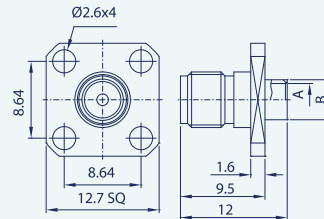
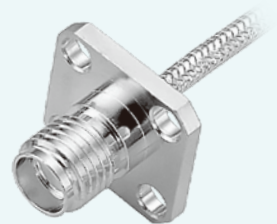
Model No.	Cable Group	Impedance
FL78J1-FS5	RG-174/U, 188A/U, 316/U RG-316/U DOUBLE BRAID	50



PANEL DIRECT SOLDER JACK

Model No.	Cable Group	Impedance
FL78J2-ES5	.141" .085", .086"	50

.085" Cable A=2.25 Min, B=3.2 Min, C=2.5
.141" Cable A=3.65 Min, B=4.5 Min, C=2

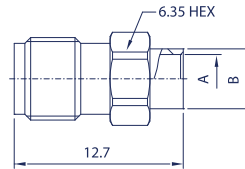


PANEL DIRECT SOLDER JACK

Model No.	Cable Group	Impedance
FL78J2-FS5	.141" .085", .086"	50

.085" Cable A=2.25 Min, B=3.2 Min, C=2.5
.141" Cable A=3.65 Min, B=4.5 Min, C=2

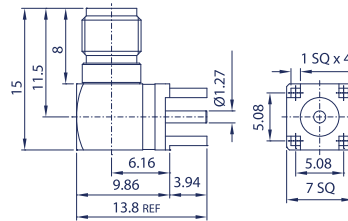
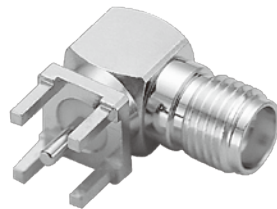
SMA series



.085" Cable A=2.25 Min, B=3.2 Min, C=2.5
.141" Cable A=3.65 Min, B=4.5 Min, C=2

DIRECT SOLDER JACK

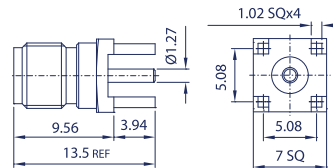
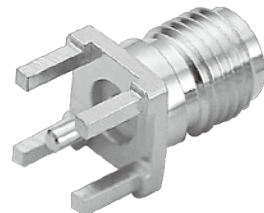
Model No.	Cable Group	Impedance
FL78J2-NS5	.141" .085", .086"	50



R/A PCB MOUNT JACK

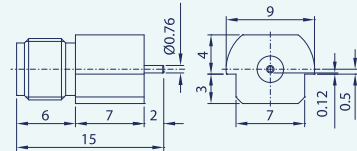
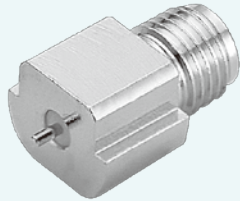
Model No.	Cable Group	Impedance
FL78J5-NR502	N/A	50

08



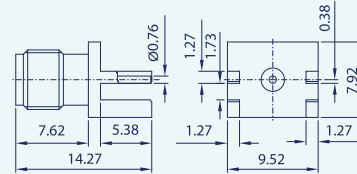
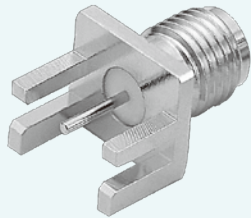
PCB MOUNT JACK

Model No.	Cable Group	Impedance
FL78J5-NS502	N/A	50



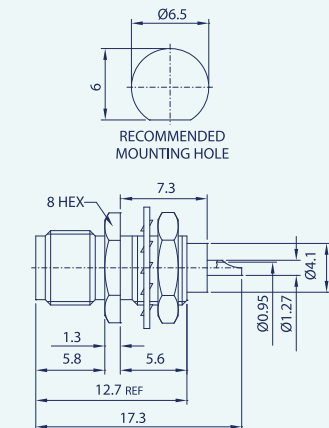
END LAUNCH JACK-SMT

Model No.	Cable Group	Impedance
FL78J6-LS502	N/A	50



END LAUNCH JACK

Model No.	Cable Group	Impedance
FL78J7-LS502	N/A	50

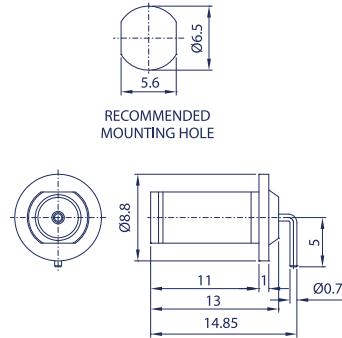


BULKHEAD RECEPT JACK

Model No.	Cable Group	Impedance
FL78J9-AS501	N/A	50

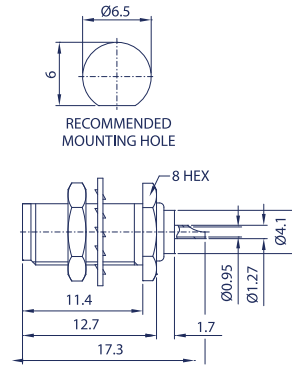
SMA

series



BULKHEAD RECEPT JACK

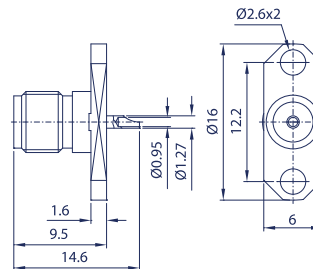
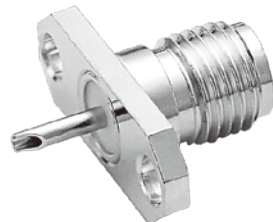
Model No.	Cable Group	Impedance
FL78J9-AS502	N/A	50



BULKHEAD RECEPT JACK

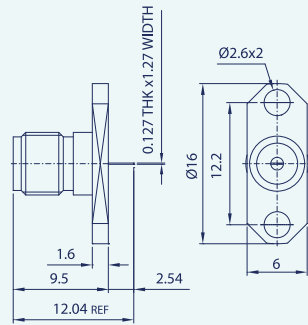
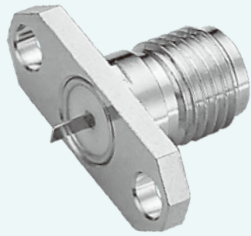
Model No.	Cable Group	Impedance
FL78J9-BS501	N/A	50

10



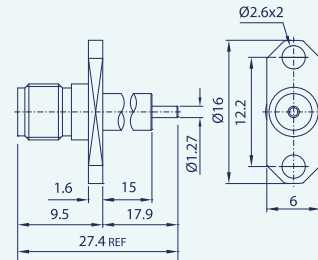
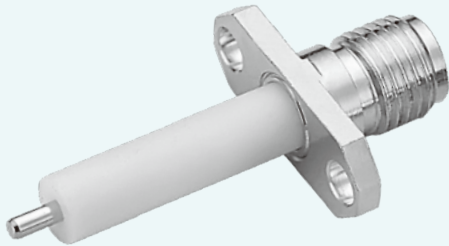
PANEL RECEPT JACK-SOLDER CUP

Model No.	Cable Group	Impedance
FL78J9-ES501	N/A	50



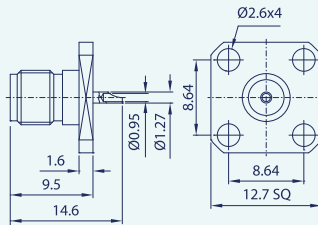
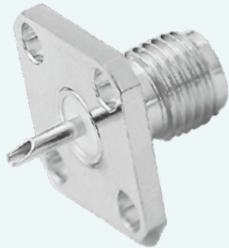
PANEL RECEIPT JACK-TAB

Model No.	Cable Group	Impedance
FL78J9-ES506	N/A	50



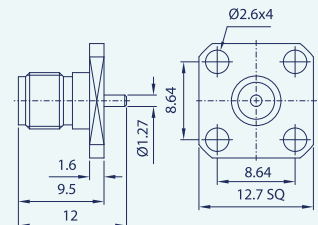
PANEL RECEIPT JACK-EXPOSED TEFLON

Model No.	Cable Group	Impedance
FL78J9-ES507	N/A	50



PANEL RECEIPT JACK-SOLDER CUP

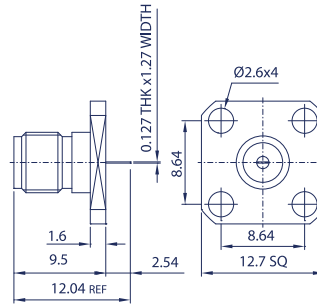
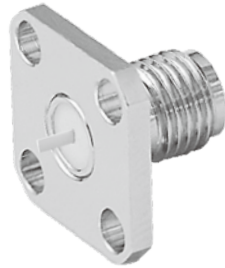
Model No.	Cable Group	Impedance
FL78J9-FS501	N/A	50



PANEL RECEIPT JACK-BLUND POST

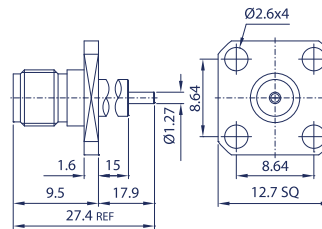
Model No.	Cable Group	Impedance
FL78J9-FS502	N/A	50

SMA series



PANEL RECEIPT JACK-TAB

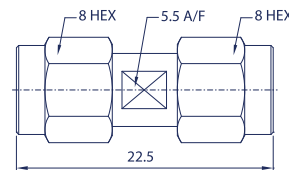
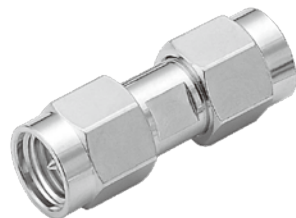
Model No.	Cable Group	Impedance
FL78J9-FS506	N/A	50



PANEL RECEIPT JACK-EXPOSED TEFLON

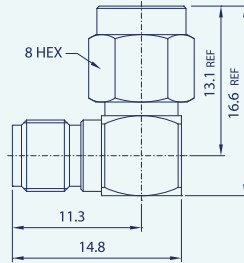
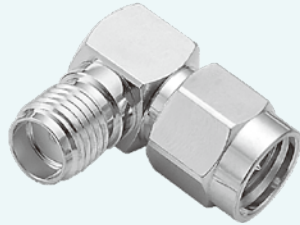
Model No.	Cable Group	Impedance
FL78J9-FS507	N/A	50

12



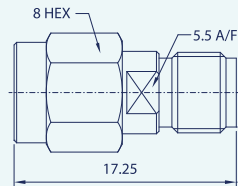
PLUG TO PLUG ADAPTOR

Model No.	Cable Group	Impedance
FL78B8-NS5	N/A	50



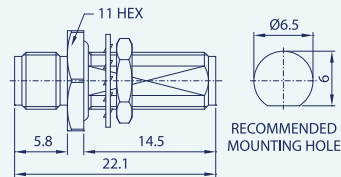
R/A PLUG TO JACK ADAPTOR

Model No.	Cable Group	Impedance
FL78E8-NR5	N/A	50



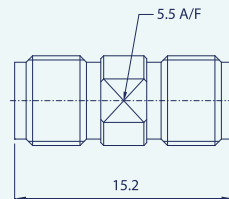
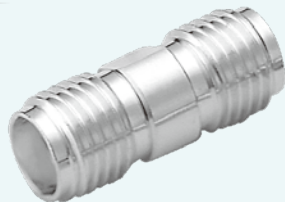
PLUG TO JACK ADAPTOR

Model No.	Cable Group	Impedance
FL78E8-NS5	N/A	50



JACK TO BULKHEAD JACK ADAPTOR

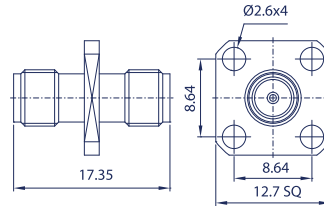
Model No.	Cable Group	Impedance
FL78G8-CS5	N/A	50



JACK TO JACK ADAPTOR

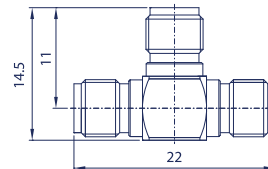
Model No.	Cable Group	Impedance
FL78G8-NS5	N/A	50

SMA series



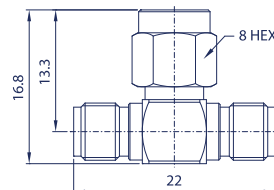
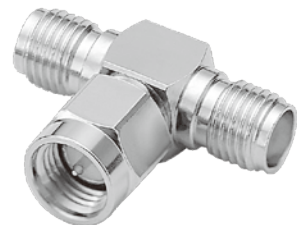
PANEL JACK TO JACK ADAPTOR

Model No.	Cable Group	Impedance
FL78G8-FS5	N/A	50



T- ANGLE JACK-JACK-JACK ADAPTOR

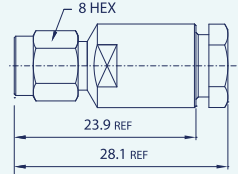
Model No.	Cable Group	Impedance
FL78H8-NT5	N/A	50



T- ANGLE JACK-PLUG-JACK ADAPTOR

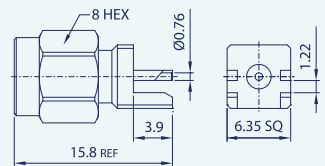
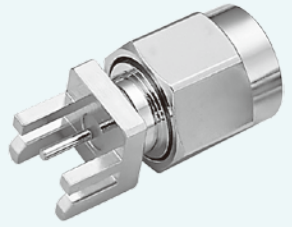
Model No.	Cable Group	Impedance
FL78K8-NT5	N/A	50





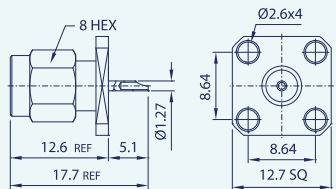
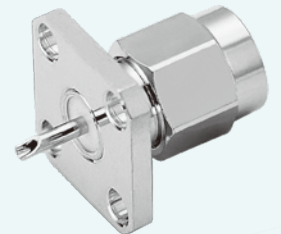
CLAMP PLUG

Model No.	Cable Group	Impedance
FL78P4-NS5	RG-174/U, 188A/U, 316/U	50



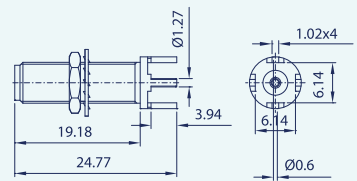
END LAUNCH PLUG

Model No.	Cable Group	Impedance
FL78P7-LS502	N/A	50



PANEL RECEIPT PLUG- SOLDER CUP

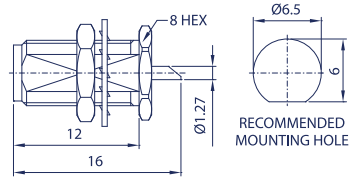
Model No.	Cable Group	Impedance
FL78P9-FS501	N/A	50



PCB BULKHEAD JACK

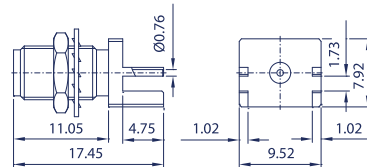
Model No.	Cable Group	Impedance
FL78J5-BS502	N/A	50

SMA series



BULKHEAD RECEPT JACK

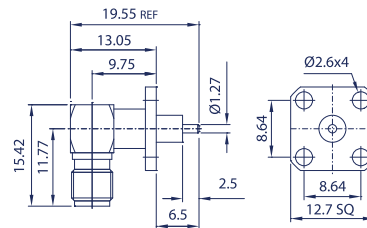
Model No.	Cable Group	Impedance
FL78J9-BS500	N/A	50



END LAUNCH JACK

Model No.	Cable Group	Impedance
FL78J7-BS502	N/A	50

16



R/A PANEL RECEPT JACK-EXPOSED TEFLON

Model No.	Cable Group	Impedance
FL78J9-FR507	N/A	50